

Accesorios

AmielBalance
MEDICAL



813

Rubber ferrule for wooden canes.
 Sizes:10-12-14-16-18-20-22 mm.



814

Black rubber ferrule with suction.Sizes:16 -18 mm.



815

Black rubber ferrule for crutches with metal ring in the inside.
 Sizes:19 - 21 mm.



816

Grey rubber ferrule for crutches with metal ring in the inside.
 Sizes:19 - 21 mm.



817

Articulated black rubber ferrule with metal ring in the inside.
 Sizes:19 - 21 mm.



818

Articulated grey rubber ferrule with metal ring in the inside.
 Sizes:19 - 21 mm.



822

Grey rubber ferrule for walkers with metal ring in the inside.
 Sizes:22 - 25 - 28 mm.



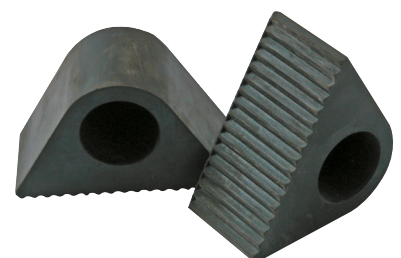
823

Grey rubber ferrule for shower benches with metal ring in the inside.
 Sizes:25 - 28 mm.



824

Black rubber ferrule replacement for exercise peddlers.
 Size: 20 mm.



812

Metal spike ferrule.
Sizes:18-20-22 mm.



825

Black rubber ferrule for aluminium walking sticks with metal ring in the inside. Size: 14 mm.



826

Brown rubber ferrule for aluminium walking sticks with metal ring in the inside. Size: 14 mm.



827

Fluorescent rubber ferrule with metal ring in the inside.
Size:19 mm.



828

Black rubber ferrule for hiking sticks with metal ring in the inside. Size: 12 mm.



8281

Black wide base rubber ferrule for hiking sticks.
Size:15 mm.



831

Flexy black rubber ferrule with 4 cm base.
Sizes:16 - 19 mm.



832

Black rubber ferrule replacement for quad canes ref.352 and 3521. Size:12 mm.



834

Black rubber ferrule with hexagonal base and with metal ring in the inside. Size: 21 mm.



8342

Black rubber ferrule with 2.5 cm base.
Size:16 mm.



835

Flexy black rubber ferrule. Size: 19 mm.



838

Swivel black rubber ferrule. Size 19 mm.



839

Black rubber ferrule for **ice and snow** Size 19 mm.



815191

Colour rubber ferrule for crutches with metal ring in the inside. Size: 19 mm.
Available colours: Red, Purple, Blue and Green.



Wide base ferrules

Rubber ferrules suitable for all types of canes (wooden and aluminium). They provide their user with greater stability whilst walking. In addition, they prevent the cane from falling.



820119 Black size 19 mm.

820122 Black size 21 mm.

82019 Greysize 19 mm.

82022 Greysize 21 mm.

Wide base rubber ferrules for wet surfaces.

Base Diameter: 8 cm. Measurements: 19 and 21 mm.

These high-quality ferrules offer the user of crutches increased manoeuvrability, stability & safety on uneven and wet surfaces.

Their slip-resistant base is in contact with the ground at all times.



819

Flexi black rubber ferrule with 5.5 cm base.

Sizes: 17 - 19 - 21 mm.

821

Flexi tripod rubber ferrule with 12 cm base and with metal ring in the inside. Size: 19 mm.

8291

Tripod rubber ferrule with 7.5 cm base and with metal ring in the inside. Sizes: 16 - 19 mm.



829

Tripod rubber ferrule with 10 cm base and with metal ring in the inside. Sizes: 16-19 mm.



833

Tripod rubber ferrule replacement for 2157 and 21571 crutches. Size: 21 mm.



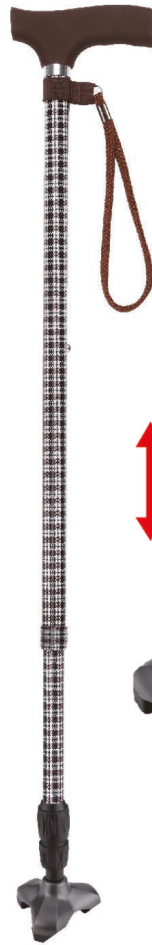
844

Wide base rubber ferrule with 12 cm base.
Sizes: 16 - 19 mm.



846

Wide base rubber ferrule with suspension. Only size, adaptable to sizes: 16 and 19 mm.



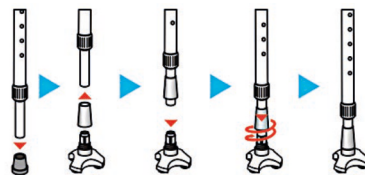
842

Quad rubber ferrule for aluminium walking sticks with 15 cm base.
Sizes: 16 - 19 mm.



840

Quad rubber ferrule for aluminium walking sticks with 8 cm base.
Sizes: 16 - 19 mm.



Walking sticks accessories

810

Black, brown, red, grey or beige cane wrist strap.

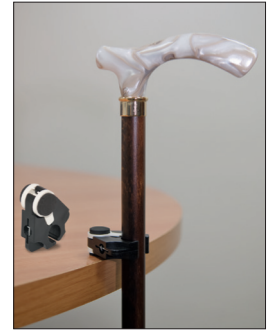


8102 8103 8104 8101 Marrón 810 Negro

8301



830



Cane Holder: Enables you to easily balance your walking stick on the edge of a table.

836

Cane holder for walkers, rollators and wheelchairs.



811

Hand pads. Stretchy hand pads which can be attached to the handles of most mobility aids.



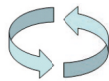
837

Cane holder for walkers, rollators and wheelchairs.



2576

Attachable wheelchair and rollator 3 in 1 holder, perfect to hold your drink, cane or torch.



Displays

794

Acrylic display for 10 folding walking sticks.



795

Cardboard display for 12 walking sticks.



803 Wooden display for 15 walkingsticks. Three levels. Size: 46 x 21 x 71cm.

804 Wooden display for 18 walkingsticks. Size: 33 x 50 cm.

805 Wooden display for 12 walkingsticks. Size: 27 x 50 cm.

803



804



805



789

Steel swivel display for 24 walking Sticks or crutches. Two levels. 12 pieces per level.



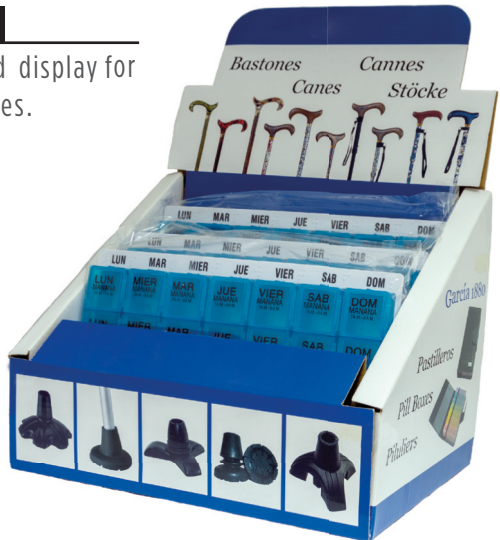
799

Steel swivel display for 12 folding walking Sticks.



7951

Cardboard display for accessories.



797 800 801

Steel display for walking sticks and accessories. Available in black and white colours.

797
Size:183 x 25 cm.



800
Size:183 x 40 cm.



798
Hook to use in displays.



801
Size:183 x 60 cm.

