



Medical Detectable Positioning Tape

www.abalance.co.il



Product Introduction

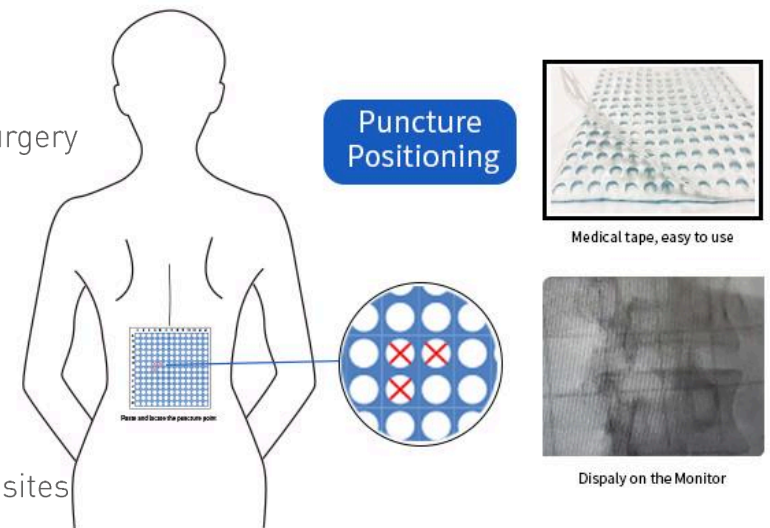


The **Medical Detectable Positioning Tape** is mainly composed of a two-dimensional detectable thread and cotton sheet with back sticker. The product does not contain any metal, which is safe and environmentally friendly, non-toxic and harmless, and can be detectable under **X-ray or MRI**. It is mainly used for the post-surgery positioning and marking under the guidance of computed tomography (CT/DR/DSA) and magnetic resonance imaging (MRI), such as **anesthesia puncture, biopsy puncture, minimally invasive, orthopedic surgery, lumbar disc interventional treatment, interventional surgery, etc.** It can make the surgery faster, more convenient and accurate, and greatly reduce the risk and error of the operation.

Compared with the traditional manual positioning method, the Medical Detectable Positioning Tape can be detectable by coordinates, which more intuitively and clearly reflects the slice position in the patient's body, so as to accurately obtain the spatial position of the lesion.

Recommended departments:

1. **Intervention department:** Body surface locating before puncture in minimally invasive interventional surgery
2. **Respiratory medicine department:** Locating of lung puncture
3. **Oncology department:** For the locating of tumor ablation
4. **Orthopedics department:** For the Locating of minimally invasive orthopedic surgery
5. **Pain treatment department:** For the locating of interventional therapy of lumbar disc and other painful sites



Detectable Ink

Medical detectable ink material, after more than 3 years of research and development, owns a number of patents in China, which can be clearly detectable under CT/DSA/MRI without artifacts. Compared with traditional metal detectable materials, the ink has the advantages of being **non-allergenic** to the human body, **no heavy metals**, **non-toxic** and **odorless**, safe and environment friendly, and is more conducive to its application on the surface of the human body.



Comparative Advantages

- Accurate

Error is less than 5mm

- Fast

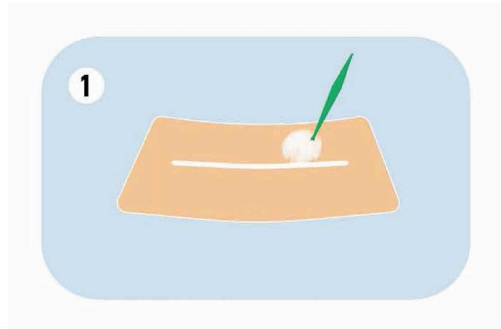
Direct detectable and positioning

- Simple

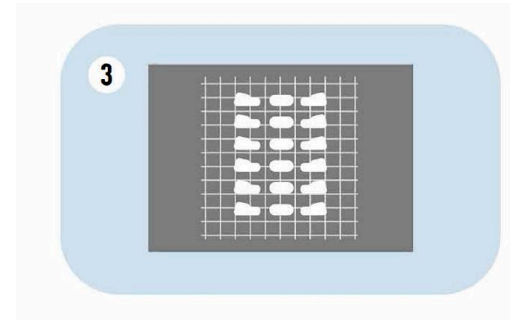
Easy to train and operate.

	PURNOTE tape	Metal tape	Traditional positioning method	Surgical Navigation methods
Accuracy	0.5 cm ²	2 cm ²	10 cm ²	0.3 cm ²
Application range	X-ray/MRI	X ray	X-ray/MRI	X ray
Risk Level	Low	Medium	Higher	Low
Wound Size	Small	Medium	Big	Small
Material Cost	Lower	Low	Low	High
Labor Cost	Low	Low	Low	High
Device Cost	NO	NO	NO	High
Overall Cost	Low	Low	Low	High
Experience	Good	Normal	Bad	Good

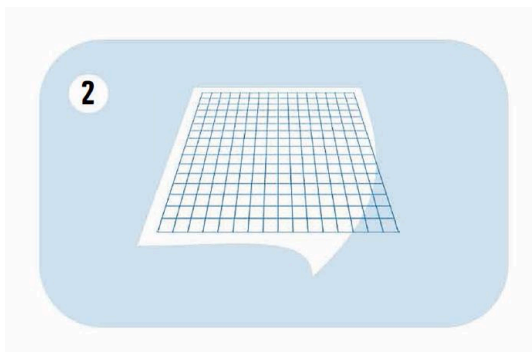
Instruction for Use



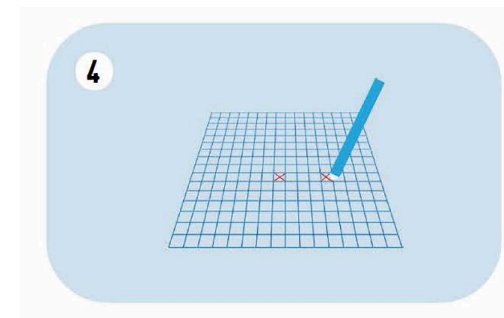
1 The part of skin which will be punctured have to be disinfected before use the tape.



3 Scan the site to be punctured by X-ray or MRI, and screenshot the image. Using the grid to confirm the puncture point.



2 Open the sterilized package and take it out, only one piece inside. Peel off the back sticker, and paste it on the part that needs to be located.



4 Mark the point and go on the operation with the position located.

Product Specification



No.	Size	Specification	Dimension	Packing	Weight
SGSWL0606	6cm*6cm	Individual Packed, EO sterile	62*33*53cm	1600pcs	7kg
SGSWL0909	9cm*9cm		62*33*53cm	1200pcs	9kg
SGSWL1414	14cm*14cm		62*33*53cm	800pcs	13kg



Thank you

www.abalance.co.il

